

12 Step Clip Launching Script

For use with Ableton Live 9

By Evan Bogunia and Sarah Howe

Installation:

-Make Sure you have the latest firmware's factory preset #10 (version 26 at the time of this writing).

-To update, use the latest version of the 12Step Editor (version 2.0 at the time of this writing), and select "Update/Reload Firmware..." from the Hardware menu.

-If you are using custom presets be sure to add the "Live Clip Launching" preset to your setlist and send it to your 12Step.

Next, we will place the script in the proper location.

On Macintosh:

1. Locate your Ableton Live 9 application (must be original, not alias or shortcut).
2. Ctrl-click on the .app file and select "Show Package Contents"
3. Now go into the "/Contents/App-Resources/MIDI Remote Scripts" folder.
4. Paste the "TwelveStep" folder into the "Midi Remote Scripts" folder.

On Windows:

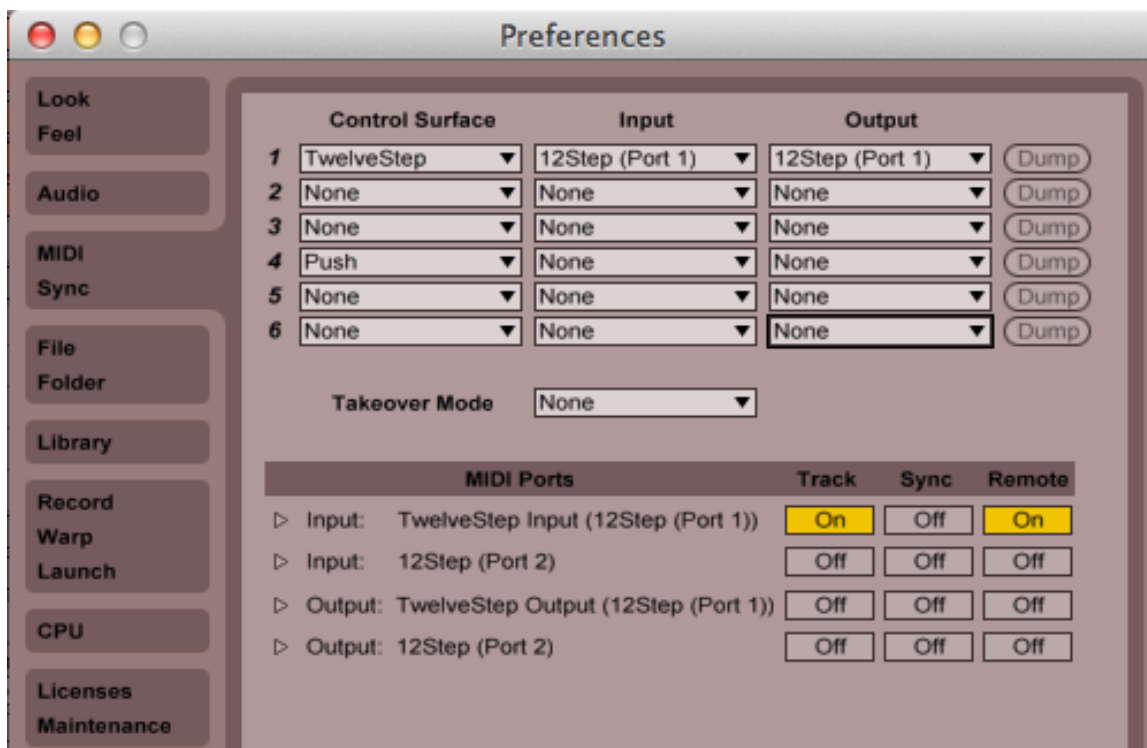
1. Locate Ableton Live 9's "Midi Remote Scripts" folder
 - On Windows XP – C:/ Documents and Settings/All Users/Application Data/Ableton/Live 9/Resources/MIDI Remote Scripts
 - On Windows 7 - C:/ProgramData/Ableton/Live 9/Resources/MIDI Remote Scripts
2. Paste the "TwelveStep" folder into the "MIDI Remote Scripts" folder.

Note to Windows 7 users: The "ProgramData" folder is hidden. If you need to find it go to "Control Panel", then to "Appearance and Personalization". Find "Folder Options" and click on where it says "Show hidden files and folders". A window will pop up. Under the "Hidden files and folders" label, click "Show hidden files, folders, and drives". Now press "apply" and you should be able to find the "Program Data" folder. After copying the installation files into their proper locations you go back to Folder Options and click "Don't show hidden files, folders, or drives".

Now you're ready to open up Live and play your session with your feet.

- 1) Open up Live and navigate to the Preferences ([cmd + ,] on Mac, [ctrl + ,] on Windows).
- 2) Navigate to the "MIDI/sync" select the "TwelveStep" from the control surfaces drop down menu.
- 3) Select 12Step port 1 for both the input and the output of the script.
- 4) Turn Track and Remote ON for the input of the TwelveStep script.
- 5) Make music.

Below is a screenshot of what your midi preferences should look like in Live.



Functionality:

The script takes control of the first 7 tracks in your Live set, and allows you to control the playback of the clips in the highlighted scene. You can move the selected scene up and down, as well as launch the scene above and below the selected scene. Below is a diagram of how the functionality is assigned to the 12Step.

