

PEARL CONCERT PERCUSSION



Philharmonic

CONCERT SNARE DRUM

Our all new Philharmonic Concert Series Snare Drums feature the revolutionary Triad Silent Strainer System and provide state of the art design and craftsmanship, combined with groundbreaking innovation, to provide the player with unprecedented control over the tone, dynamics, and performance of the instrument.

A proprietary combination of three unique snare sets, using both graduated and even tensioning, offers seamless timbral overlapping, ultra-smooth dynamic transition, and greatly extended dynamics and sensitivity. Our new Triad Silent Strainer provides three individual tension adjusters allowing you to fine tune the optimum tension for each type of snare material, and a single global adjuster is used for overall tension. The Triad Silent Strainer

System is completely quiet, offering virtually silent, precision off/on action, and all snares can be effortlessly changed by simply loosening the adjuster and one drum key nut.

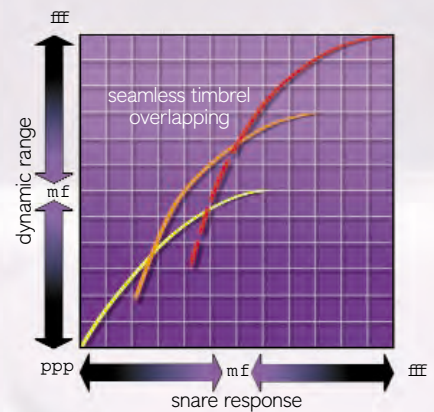
Our Philharmonic Concert Snare Drums are available in three different shell materials, solid Maple, ply Maple, and our new 3mm Cast Aluminum, to compliment a wide variety of playing situations, and each offers a 14"x5" and a 14"x6.5" choice in size.

Other outstanding features of both Maple drums and our Cast Aluminum Philharmonic Concert Snare Drums include vintage style snare beds for optimum snare response and increased control, vintage style tube lugs for a stunning visual, Pearl's renowned MasterCast die-cast Hoops, true Stainless Steel Tension Rods, and

Remo® Renaissance Heads.

Pearl's new Philharmonic Concert Snare Drums have been designed to be the finest Concert Snare Drums ever offered, and one listen could change your mind about what a truly great Concert Snare Drum should be.

Pearl's new Philharmonic Concert Snare Drums...you should expect nothing less than the finest snare drums you have ever heard, but be totally prepared for much, much more.



Graduated Tension Gold Cable

Our unique Gold Cable is provided in five strands of heavy gauge for 6.5" drums, and seven strands of thin gauge for 5" drums, and their Graduated Tension provides unequal smooth dynamic transition. These two different configurations are designed to help compensate for the tonal differences in shell depth. Our Gold Cable provides a timbre similar to vintage gut offering both great cut and projection perfect for loud performance levels.

Uncoated Stainless Steel Cable

Eight evenly tensioned strands of our exclusive Stainless Steel Cable offers a bright, fairly wet, and very saturated snare timbre, great for low dynamic performance levels with great articulation.

Snappy Wire

Four evenly tensioned strands of Pearl's proprietary Snappy Wire offers a wet timbre with clear and articulate sensitivity great for extremely soft performance levels.



Solid Maple and Ply Maple Shell Philharmonic Series Snare Drums are available in either #103 Piano Black or #101 High Gloss Walnut exterior finishes.



PHM-1465
14"x6.5", 7.5mm Solid Maple Shell



PHM-1450
14"x5", 7.5mm Solid Maple Shell



PHP-1465
14"x6.5", 7.5mm Ply Maple Shell



PHP-1450
14"x5", 7.5mm Ply Maple Shell



PHA-1465
14"x6.5", 3mm Cast Aluminum Shell



PHA-1450
14"x5", 3mm Cast Aluminum Shell



PHF-1412
14"x12", 7.5mm Ply Maple Shell



PHF-1616
16"x16", 7.5mm Ply Maple Shell

SOLID MAPLE SHELL

Our Philharmonic solid Maple drum features a shell painstakingly hand formed from a single, 7.5mm thick ply of fully aged prime Maple. No other concert snare drum on the market today can match the richness, warmth, and depth of tonal dynamics offered by this outstanding concert instrument.

PLY MAPLE SHELL

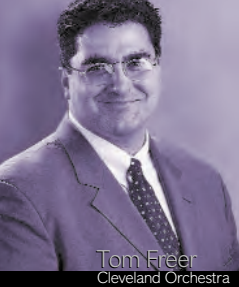
Our 7.5mm ply Maple shell offers the unmistakable warmth of aged Maple and is constructed by Pearl's patented Heat Compression Shell Molding System. Its sound is very similar to our solid Maple shell, but with a slightly dryer yet more explosive tone.

CAST ALUMINUM SHELL

For situations in need of increased attack, projection, and volume, our Philharmonic Cast Aluminum Shell Snare Drum is the perfect answer. Our exclusive 3mm cast Aluminum alloy offers a warmth and richness similar to wood, but with increased brightness and attack, characteristic of metal shell snare drums. Simply put, our unique Cast Aluminum Philharmonic Concert Snare Drum offers the best of both tonal worlds.

FIELD STYLE SNARE DRUM

Our Philharmonic Series Field Snare Drums offer the emotion of traditional Civil War style rope Marching drums, combined with all the technologically advanced features common with our other Philharmonic Series Snare Drums. This 7.5mm ply Maple shell drum is available in two sizes complete with our exclusive Triad Silent Strainer System and SuperHoop II rims, and offers a superior warmth, depth and tonal sensitivity never before available to a Field Drum. This is without doubt the finest traditional style Field Drum on the market today.



Tom Freer
Cleveland Orchestra



Thomas Burritt
UT Austin



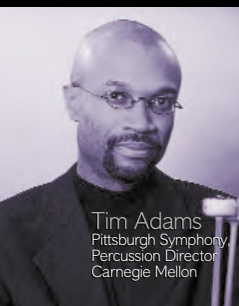
Catherine Meunier
Independent Artist



David Gross
Grand Rapids Symphony



Kuniko Kato
Independent Artist



Tim Adams
Pittsburgh Symphony
Percussion Director
Carnegie Mellon

Symphonic

SNARE DRUMS

Our prestigious Masters Series Symphonic Custom Snare Drum was developed exclusively for the concert hall and for the percussionist needing the ultimate in versatility for a wide variety of playing situations. This outstanding drum features a 7.5mm, 100% aged Maple shell, formed by our patented Heat Compression Shell Molding System, and finished in beautiful

high gloss Antique Sunburst. Classic style tube lugs with our MasterCast die-cast hoops and genuine Remo Renaissance heads give this instrument an unmistakable vintage look. But in sharp contrast to its classic visual, is the state of the art precision and versatility of our Multi-Timbre Snare Strainer.

Pearl's revolutionary Multi-Timbre Snare Strainer System utilizing three individually adjustable throw-off levers and tension controls for each of its three different snare wire materials. Each lever controls either six strands of gut, cable, or wire to offer you almost unlimited sound possibilities. Our Symphonic Series Snare Drum

and Multi-Timbre throw-off system offers a wide variety in sound quality and tone, simulating an almost endless array of different snare drums, depending on the combination of snares chosen. With all three levers in the on position, you have a snare drum with extreme sensitivity, and almost endless dynamic range. Symphonic Series Snare Drums are available in both 6.5"x14" and 5.5"x14" sizes.

Our Symphonic Series concert snare drum offers a perfect combination of classic styling, supreme quality and craftsmanship, unsurpassed tonality, and an unprecedented control and versatility that no other drum provides.



SYP-1465
14"x6.5", 7.5mm 6Ply Maple Shell



SYP-1455
14"x 5.5", 7.5mm 6Ply Maple Shell

Multi-Timbre Snare Strainer

Three separate snares types can be individually controlled for both tension and position, providing seven different snare positions and an endless array of sound possibilities.



SENSITONE SNARE DRUMS



SCB-1450B
14"x 5", SensiTone Classic II, Brass Shell



SCS-1450
14"x 5", SensiTone Classic II, Steel Shell



STS-1355
13"x 5.5", SensiTone Power Piccolo, Steel Shell



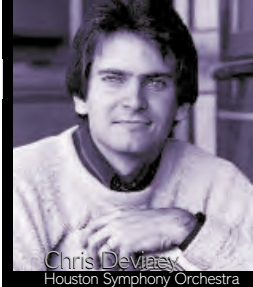
STB-1355
13"x 5.5", SensiTone Power Piccolo, Brass Shell



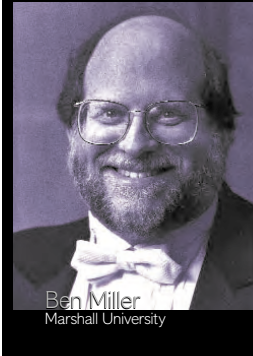
STS-1250
12"x 5", SensiTone Power Soprano, Steel Shell

SensiTone Classic Snare drums are available with either Brass or steel shells, and represent a perfect balance of heritage and technology. Vintage style tube lugs, die-cast hoops, beaded shell, and our classic SR-017 Strainer reflect a look of decades gone by. While cutting edge functionality, dependability, and the sound these drums produce, lets you know immediately this is definitely one of the finest metal shell snare drums on the market today.

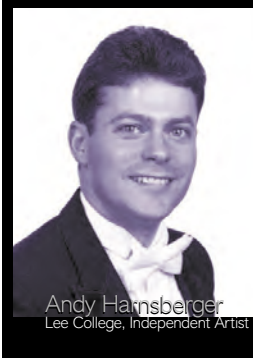
For the player needing an increase in power, focus and projection, or maybe just added flexibility for certain performance applications, our SensiTone Custom Alloy Power Piccolo and Power Soprano Snare Drums offer all this and more. Two unique sizes in Steel, 13"x5" and 12"x5", plus a 13"x5" model in Brass only, make them perfect as both a primary or secondary drum.



Chris Devias
Houston Symphony Orchestra



Ben Miller
Marshall University



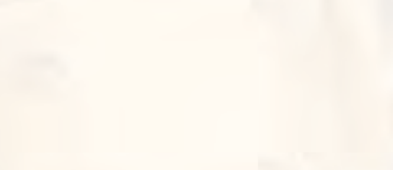
Andy Harnsberger
Lee College, Independent Artist

FFS SNARE DRUMS

Pearl's Free Floating System Snare Drums have remained among the best selling and most widely used drums in the world. With absolutely no hardware touching the shell, you get a total sound with the maximum resonance and the full tonal contribution and coloration the shell has to offer. Free Floating Snare Drums are available in 14"x 3.5", 14"x 5" and 14"x 6.5" sizes and all sizes are available with your choice of either a Brass, Copper, Steel or 7.5mm Maple shell.



Steve Hearn
Independent Artist



FM-1465
14"x 6.5", Free Floating System, 6 ply Maple Shell



FB-1435
14"x 3.5", Free Floating System, Brass Shell

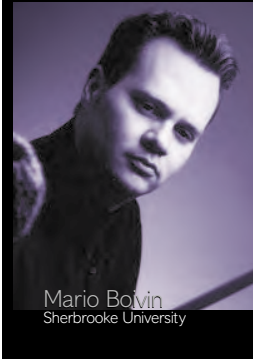


FC-1450
14"x 5", Free Floating System, Copper Shell



PICCOLO SNARE DRUMS

Piccolo Snare Drums have become some of the best selling drums we offer. Their crisp, brilliant attack, and tight sound with excellent projection makes them a great musical choice. We offer 13"x3" Piccolo Snare Drums in Brass, 6ply Maple, and with black finished Steel shell choices, and we also offer a 14"x4", 7.5mm aged Maple shell Piccolo that produces an incredibly warm tone with great tuning latitude that few other drums can match.



Mario Boyin
Sherbrooke University



B-1330
13"x 3", Brass Shell



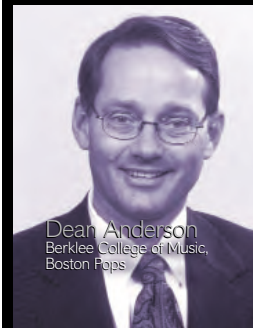
M-1330
13"x 3", 6 ply Maple Shell



S-1330B
13"x 3", Steel Shell



M-1440
14"x 4", 6 ply Maple Shell



Dean Anderson
Berklee College of Music,
Boston Pops

PEARL CONCERT TOMS

Pearl offers three distinctively different series of Concert Toms from which to choose. Our Philharmonic Series below represents the ultimate in both sound and craftsmanship for the professional player. Exclusive 100% African Mahogany, 5mm thick shells, with fully aged Maple reinforcement rings, allow these drums to produce a warmth, depth of tone, and supreme body, no other toms at any price can match. Philharmonic Series Concert Toms feature our 2.3mm solid steel SuperHoop II rims, Remo Renaissance Ambassador Heads, a beautiful hand stained

matte Walnut finish, and offer both single and double head designs. Available sizes include 6"x8", 8"x8", 10"x10", 12"x10", 13"x11", 14"x12", 15"x14", and 16"x14", and our T-980W Twin Tom stand with our exclusive Uni-Lock gearless positioning system is recommended.

Our Symphonic Series Concert Toms, shown at right, offer exactly the same outstanding features as our Philharmonic Series with the exception of the shell construction. Symphonic Series Concert Toms feature 7.5mm 100% aged Maple Shells for a more classic tone offering a great balance of highs, mids and lows.

Double headed toms for both Philharmonic and Symphonic Series sets feature our Optimount Suspension System which grips the drum by the tension rods at both top and bottom, allowing the drum to freely resonate. Single headed toms feature our patented I.S.S. mounts that grip the drum by the rim providing the same unrestricted resonance.



Optimount
Our exclusive Optimount Suspension System grips the double headed drum at both top and bottom allowing the tom to resonate freely unrestricted without any mounting hardware touching the shell.



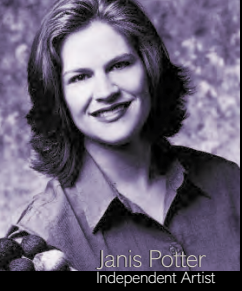
I.S.S.
Pearl's patented Integrated Suspension System offers the most simple, easy to use and ultimately effective suspension mount available. By gripping the drum by the rim, the drum is allowed to freely resonate unrestricted.



Philharmonic Series Concert Toms
Single Headed, African Mahogany Shell



Philharmonic Series Concert Toms
Double Headed, African Mahogany Shell



Janis Potter
Independent Artist



Mark Ford
University of North Texas



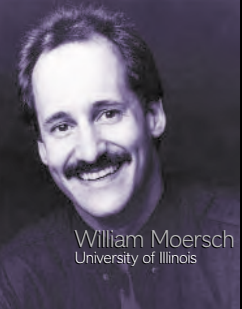
J. B. Smith
Arizona State University



Kunihiko Komari
Independent Artist



Eduardo Leandro
University Mass. - Amherst



William Moersch
University of Illinois



Symphonic Series Concert Toms
Double Headed, 100% Maple Shell



Symphonic Series Concert Toms
Single Headed, 100% Maple Shell



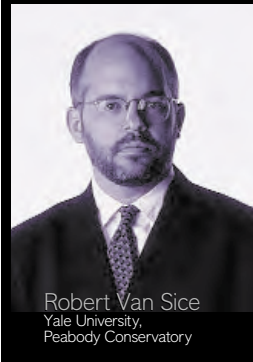
Concert Series Concert Toms
Single Headed, Mahogany Shell

SYMPHONIC SERIES TOMS

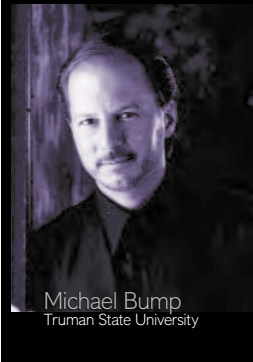
- 100% Maple Shells
- Single and double headed models.
- Optimount or I.S.S. Suspension Mounting System.
- 2.3mm SuperHoop Rims.
- Renaissance Ambassador heads.
- Matte Walnut Finish.
- 6"x8", 8"x8", 10"x10", 12"x10", 13"x11", 14"x12", 15"x14", and 16"x14" sizes.



Jonathan Haas
Aspen Music Feat,
NY Chamber Symphony
Peabody Conservatory



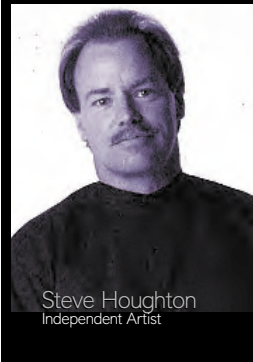
Robert Van Sice
Yale University,
Peabody Conservatory



Michael Bump
Truman State University

CONCERT SERIES TOMS

- 100% Mahogany Shells
- Single head design.
- Direct Mounting System.
- 1.6mm Steel Rims.
- Durable black covered Finish.
- Complete sets of 2 featuring Pearl's T-800W Twin Tom Stand.
- Available sets include:
PTE-0608, 6"x8", 8"x8".
PTE-1012, 10"x10", 12"x10".
PTE-1314, 13"x11", 14"x12".
PTE-1516, 15"x14", 16"x14".



Steve Houghton
Independent Artist



Greg Goodall
Independent Artist

NEXUS

Celebrating over 30 years as a group, the ensemble's five original members delight audiences worldwide with a repertoire that includes contemporary percussion masterworks, ragtime, world music, group improvisations, and compositions by the members themselves. Dubbed "the high priests of the percussion world", the ensemble's virtuosity, innovative programming and insatiable musical curiosity have inspired compositions from some of the greatest composers of our time.



Russell Hartenberger



Bill Cahn



John Wyre



Bob Becker



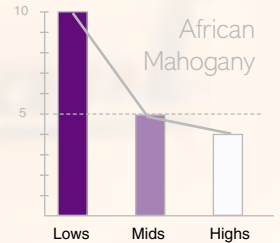
Robin Engelman

PHILHARMONIC SERIES BASS DRUMS



PBA-3616 Philharmonic Concert Bass Drum.
STBD-36 Concert Bass Suspension Stand.

Our Philharmonic Series Concert Bass Drums are created from 4 plies of exclusive African Mahogany, using Pearl's patented Heat Compression Shell Molding System. This unmatched material, prized the world over for its superb low-end presence and warm resonant tone, together with our HC/sms forming method known throughout the industry as producing the most exacting shells available, combine to produce a Bass Drum that is most simply without equal on the concert scene today. Our 8mm handle bolts, wide 2" 100% Maple Hoops, and our Silent Tensioning System lugs provide perfect, accurate tuning, and Remo Fiberskyn III heads offer the ultimate canvas from which to create. Philharmonic Series Bass Drums feature a beautiful, hand stained matte Walnut finish, and are available in 28"x14", 32"x16", 36"x16", and 36"x18" sizes.



Our supreme quality African Mahogany is extremely rich in low end frequencies, with beautifully smooth mids and a slight roll-off in the higher register. Drums made from African Mahogany have a warmth and body that set them apart from all others. Ideal for applications requiring ultimate "bottom" and punch.

Our STBD Suspension Stand is available in three sizes, fitting 32", 36", and 40" Bass Drums. It features all steel frame construction with a complete steel arc that allows the drum to hang suspended by a rubber web for maximum tone, resonance, and sustain. It offers full height adjustability, a foot rest, angle adjustment system and heavy duty locking casters.



Precision Angle Adjustment
The playing angle of the Bass Drum is easily adjusted and locked into place with a precision locking system with a large, easy grip handle.



Arc Suspension System
A steel arc encompasses the entire Bass Drum and an attached rubber web gently suspends the drum allowing it to produce maximum tone, resonance, sustain.



Locking Wheels / Foot Rest
Extra Large, locking wheels provide effortless, precision stage placement, and a non-slip foot rest is provided for accurate playing technique.

CBS-35 STAND



CBS-35A Concert Bass Stand (Floor Spikes),
CBS-35C Concert Bass Stand (Locking Wheels).

Our CBS-35 Concert Bass Drum Stand allows the drum to rest gently, yet securely, on four isolating rubber cushions, and is fully adjustable, including the foot rest, to accommodate Bass drums of different sizes. Available in two models, with floor spikes or wheels.

CBS-15 STAND



CBS-15 Folding
Concert Bass Stand.

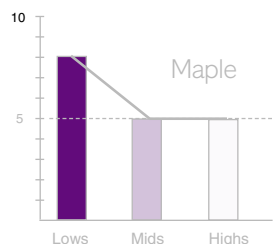
The CBS-15 is a folding Bass Drum Stand designed for portability and light weight. It can be used as both a performance or rehearsal stand, and features rubber isolation sleeves and fits Drums from 14" to 24" in diameter.



PBM-3618 Symphonic Series Concert Bass Drum.
CBS-80 Concert Bass Drum Stand.

SYMPHONIC SERIES BASS DRUMS

Symphonic Series Concert Bass Drums offer the professional player the famed voice of a shell constructed from 6 plies of 100% aged Maple and formed using our patented Heat Compression Shell Molding System. Maple has long been a favorite shell material due to its warm, well balanced tonal qualities, excellent projection, and lasting resonance. Our Symphonic Series Bass Drums also offer many of the same outstanding features found on our top of the line Philharmonic Series, including 8mm handle bolts, 2" wide 100% Maple Hoops and our Silent Tensioning System Lugs for the ultimate in tuning integrity, and Remo Fiberskyn III Heads for a great tone. Symphonic Series Bass Drums are available in 28"x14", 32"x16", 32"x18", 36"x16", 36"x18", 36"x20" and 36"x26" sizes, and are finished in beautiful matte Walnut stain.



Maple offers a smooth, warm, well rounded tone, with equal amounts of hi-end attack and mid range body, and an excellent low end punch. Ideal for all around applications.

Our CBS-80 Concert Bass Stand offers a super sturdy, yet lightweight tube frame with a direct bolting attachment to the Bass Drum. It offers a large tube type, locking swivel adjustment for drum angle, and four large easy rolling, lockable wheels for convenient positioning. Two sizes are available to fit either 32" or 36" Concert Bass Drums



PBE-3216 Concert Series Bass Drum.
CBS-35C Concert Bass Drum Stand.

CONCERT SERIES BASS DRUMS

Concert Series Bass Drums were designed to meet the need for a great sounding, well constructed Concert Bass Drum, well within the budget constraints of today's schools. Concert Series Bass Drums feature a 7 ply, 100% Mahogany shell that offers an impressive, full bodied warm tone, with excellent low end presence, and is constructed by our HC/sms system for unmatched quality. Remo Fiberskyn III Heads, key style tuning rods with high tension claws, and superb 2" wide 100% Maple hoops, provide further options not normally found on Bass Drums in this price range. An extremely durable black covered finish allows these drums to look and sound great after years and years of use. Concert Series Bass Drums are available in 28"x14", 32"x16", 36"x16", and 36"x18" sizes.

SNARE STANDS

Pearl has amassed a lasting reputation as manufacturing the finest, most durable, best made percussion hardware in the industry, and our Snare Stands are no exception. Features like our fluid motion, dual pivoting Uni-Lock snare basket adjustment, super smooth nylon bushing inserts for all pipe joints, and stands with a wide variety of features and applications, insure that for every snare drum, there is a Pearl Snare Stand that will perfectly fit both your needs and budget requirements. Our S-885WL and S-885L Snare stands were designed specifically with the needs of the Concert Percussionist in mind including super wide stance, extremely sturdy tripods, extra long reach tubes, our dual pivoting Uni-Lock basket system and oversized rubber drum grips. To extend the reach of any of our stands, check out our TX-80 Tube Extender below.



S-885WL

- Oversized rubber snare grips
- Dual pivoting Uni-Lock basket
- Nylon sleeved pipe joints
- Wide Stance double braced legs
- Extended Concert height



S-885L

- Oversized rubber snare grips
- Dual pivoting Uni-Lock basket
- Nylon sleeved pipe joints
- Wide stance single braced legs
- Extended Concert height



S-985W

- Oversized rubber snare grips
- Dual pivoting Uni-Lock basket
- Nylon sleeved pipe joints
- Double braced legs
- Reversible rubber/spike feet



S-885W

- Oversized rubber snare grips
- Dual pivoting Uni-Lock basket
- Nylon sleeved pipe joints
- Double braced legs



S-850

- Oversized rubber snare grips
- Uni-Lock basket tilter
- Nylon sleeved pipe joints
- Single braced legs
- Concert height model available S-850L



S-800W

- Oversized rubber snare grips
- Deep gear basket tilter
- Sleek pipe joint with long nylon sleeve
- Double braced leg tripod



S-700

- Deep gear basket tilter
- Sleek pipe joint with long nylon sleeve
- Single braced leg tripod
- Light weight yet extremely sturdy
- Concert height model available, S-700L

TX-80 TUBE EXTENDER

If you prefer the more compact tripod of a standard stand, but need extra height for a Concert application, our TX-80 Tube Extender allows you to extend the height of any of our standard Snare Stands, or any stand that uses 7/8" diameter pipes.



TX-80
Tube Extender

TOM AND CYMBAL STANDS



T-980W Twin Tom Stand

C-855SC Goose Neck Cymbal Stand

C-855AC Cymbal Cradle

Our new C-855AC is an orchestral style Cymbal Cradle designed to hold a set of cymbals while not in use. It features a sturdy single braced tripod, the cradles on the C-855AC adjust to accommodate different size cymbals, and overall stand height is also easily adjustable and features a memory lock.

Our new C-855SC Goose Neck Cymbal Stand provides a durable rubber suspension system allowing the cymbal to hang from the top to provide maximum cymbal resonance and the ultimate in sustain. The C-855C holds cymbals up to 20" and is fully height adjustable.

Our T-980W Twin Tom Stand is the ultimate Tom Stand on the market today. Super sturdy double braced legs, smooth nylon sleeved height adjustment, plus two incredible TH-100S Tom Arms with our patented, gearless Uni-Lock positioning system.

TAM-TAM / GONG STAND

Our Tam-Tam/Gong Stand is based upon our top of the line Suspension Bass Drum Stand and features a tilting circumference ring, large, locking, easy roll wheels, and three sizes are available to suspend Gongs up to 32" or smaller, 36" or smaller, and 40" or smaller in diameter.

PERCUSSION THRONE



D-150T Timpani Throne

For the Concert Timpanist or Percussionist, a well designed Throne is a must. Our newly designed D-150T Timpani Throne features a sturdy four leg base, precision screw type, lockable, height adjustment system, and our all new metal PanHead seat bottom which is panned to lower the center of gravity, and with its new die-cast clamp system, provides the most stable, secure seat mounting method possible.



STBD Concert Tam Tam/Gong Stand

PERCUSSION KITS

Nothing can compare to the inspiration and confidence a student receives from the sound and feel of a true high quality beginning instrument. Pearl's Percussion Kits set the standard for all others to follow offering a tonal quality and durability unmatched in the market today. Our PK-750 and PK-600 Percussion Kits feature a 2-1/2 octave, satin finished bell set with durable plastic ends and side frames. An ergonomically designed, height adjustable stand, with our patented quick release mounting attachment, make these bells easy for the beginner to set-up.



PK-800 Percussion Kit
PK-800C Percussion Kit/Rolling Cart



PK-750 Percussion Kit



SNARE KITS

Our Snare kits offer a high quality, ten lug, 5-1/2"x14" chrome plated steel snare drum, for a rich, well balanced tone, with great sensitivity and projection. Our sturdy S-700L basket style, height adjustable, heavy duty snare stand with deep gear angle adjustment is also included. Together they represent the highest quality beginner snare kit available today. A Gladstone style practice pad and sticks are also included, and as with our Percussion kits above, two models are available from which to choose. Our SK-750 features an injection molded hard case with individual form fitted interior compartments and a molded handle for superb protection during transport. Our SK-800 features a new, lighter weight, reinforced, backpack style nylon carrying case with separate zipper compartments for both the snare and the stand, and the PK-800C includes detachable pull cart.

One turn of an oversized wingnut attaches and releases the bells from the stand. The stand also features an oversized 8mm threaded post that accepts the included tunable practice pad. A music rack, sticks and mallets are also included.

Our PK-750 Percussion kit features all of the above, plus a slim line, form fitting, injection molded hard case with separate internal compartments. Our PK-800 is identical but offers a durable backpack style nylon soft bag and the PK-800C case includes a detachable pull cart.



SK-800 Snare Kit
SK-800C Snare Kit/Rolling Cart



SK-750 Snare Kit



PL-800C Percussion Learning Center/Rolling Cart

The PL-800C Percussion Learning Center is the ultimate kit for percussion education. Designed for the serious percussion student, the PL-800C incorporates bells and snare training in one easy package. The PL-800C features both our 2-1/2 octave, satin finished bells with durable plastic side frames and rails, and a 13" stainless steel covered wood shell snare drum with adjustable internal muffler. Our sturdy bell stand features an oversized quick release wingnut, making assembly a snap, plus the upper tilting basket section of our S-700L Snare Stand is included to quickly convert the stand for snare training. A music stand and mallets are included for the bells, and sticks and a silent practice pad complete the snare. Everything is stored for transport in our new highly durable nylon backpack style carry bag with separate protective compartments for the bells, snare, and stand, plus the added benefit of a detachable pull cart for easy transport. You simply can not find a more complete, high quality kit for percussion education.

PRACTICE PADS AND KITS



TK-100 Training Kit



TK-200 Training Kit



SD-50H

Our Practice kits provide an easy way to practice drumset technique...silently. Our TK-100 and TK-200 Practice kits feature ultra high quality foam rubber pad surfaces for a realistic drum feel with natural rebound. The pads are mounted on a fully adjustable and foldable rack for quick storage. The TK-100 is a standard five piece layout and the TK-200 is for double bass practice. Our SD-50H is a single pad version with stand for snare training.



RP-50 Drumset Pad Set



RP-40C Cymbal Pad Set

To practice on your full drumset without disturbing the neighbors, Pearl's RP50 Drum Pads and RP-40C Cymbal Pads are the answer. The RP-50 feature pads for 12", 13", 14" and 16" drums, and a universal size bass drum pad. The RP-40C provides pads for a pair of 14" to 16" hats, plus two pads to fit cymbals from 18" to 20".



PCW-125DX
Elite Series Wood Tumba

PCW-110DX
Elite Series Wood Quinto

PCW-117DX
Elite Series Wood Conga



PCF-117DX Elite Series
Fiberglass Conga

PCF-110DX Elite Series
Fiberglass Quinto

PCF-125DX Elite Series
Fiberglass Tumba

ELITE WOOD CONGAS

Some of the top players in the world use Pearl's Elite Wood Congas as their instruments of choice. Features include beautifully handcrafted 100% Thai Oak shells, genuine Water Buffalo heads, polished steel Comfort Crown Rims, and several colors from which to choose.

ELITE FIBERGLASS CONGAS

Our Elite Fiberglass Congas offer a precision formed fiberglass shell that produces a brighter tone with increased volume, projection, and cut. They feature genuine Water Buffalo heads, polished steel Comfort Crown rims and hardware, and two durable gel coat colors.



PJW-340 Elite
Wood Djembe

PJF-350 Elite
Fiberglass Djembe

PJF-320 Elite
Fiberglass Djembe



PBC-511 Elite
Series Box Cajon

PCJ-120 12" Elite
Series Tube Cajon

PCJ-100 10" Elite
Series Tube Cajon

PCJ-140 14" Elite
Series Tube Cajon

DJEMBES

Pearl offers Djembes of both 100% Thai Oak, and hand crafted Fiberglass. Our 12.5" Elite Wood Djembe features a smooth "Hourglass" shape, Goat Skin heads, several color choices and polished Comfort Crown hardware. Our Elite Fiberglass models offer the same hardware and heads and are available in 12.5" and 14" sizes, and two gel coat finishes.

BOX AND TUBE CAJONS

Our unique box Cajon offers Thai Oak construction, rear facing sound hole, and tunable snares stretched inside against the playing surface. Our Elite Tube Cajons are played like Congas offering great bass and cutting slaps, nest neatly inside one another for compact transport, and is available in 3 sizes in #511 natural Thai Oak.



PBW-300DX Elite Wood Bongo

PBF-300DX Elite Fiberglass Bongo



PC-1000QRS Multi-Stand
Elite Timbales
PC-1000TC Timbale Brace
and Cowbell Bracket

BONGOS, TIMBALES, AND QRS SYSTEM STAND

We offer both Thai Oak and Fiberglass Bongos to perfectly match our Congas in percussion set-ups. They feature an oversized Hembra for great bass response, quality skin heads, and polished steel Comfort Crown rims and hardware. Our great sounding Brass Timbales can be purchased individually and are mounted on our new QRS System Multi-Stand. The QRS stand features a quick release, "no wingnut" mounting system, independently adjustable legs, and the unique ability to accept any combination of drums, Congas, Djembes, or any gear with a standard percussion style mounting bracket.

ELITE COWBELLS

Our all new Elite Series True Tone Cowbells are a world apart from any other bells on the market today. They feature advanced, sonic engineered shapes, with precision Argon welded seams, to produce a sound quality you've just got to hear to believe. Their tone is full, clear and bright, with excellent sustain, far superior to that dull thud many are accustomed to. Elite Cowbells have been designed for players requiring the ultimate in strength and performance. Their angled mounting bracket features an internal eyebolt that clamps against the mounting arm creating the most secure, easy to use mounting method available. Elite Cowbells are available in six sizes, including our Rock Bell, which features our exclusive PowerFlange edge formed into the bell.

PowerFlange is a ridge at the opening of the bell that allows it to produce a dry, controlled, yet open tone with more volume and strength than bells with plastic strips attached. With PowerFlange, you'll never have to muffle your bell again.

Our Elite Series hand-held Agogo bell is an excellent performance bell. It offers an authentic Brazilian sound and tuning. You can play the Agogo bell traditionally with sticks, and you can also squeeze the flexible connecting handle to click the two bells together for an additional sound.



ECB-9
Timbale Bell

ECB-6
Mambo Bell

ECB-5
Fusion Bell

ECB-3
Cha-Cha Bell

ECB-10
Rock Bell

ECB-1
Chico Bell

ECB-22
Agogo Bell



PSK-10
Shekere



PEC-12
Egg Carton



PAP-20
Agogo-Pop

PAP-50
Agogo-Pop



PGA-32
Hex Ganza

PGA-30
Hex Ganza



PSR-03
Shakerine



PGR-01
Mini- Ganzeiro

PSR-01
Mini- Shakerine



PAS-100
Ago-Sha

PAS-20
Ago-Sha

PAS-50
Ago-Sha



PGA-20
Basket Ganza



PFM-20
Beaded Maracas

HAND HELD SHAKERS AND EFFECTS

We offer a full line of innovative hand percussion effects to help you create a wide variety of interesting and beautiful sounds and rhythms. Our Fiberglass Shekere is an outstanding instrument featuring a precision formed, traditional shaped, fiberglass shell for increased volume and projection. It is about half the weight of other fiberglass Shekeres and has adjustable tension beads allowing you to vary the sound. Our new Egg Carton features three egg shakers in a translucent tube. The eggs can be played separately or all packed in the carton as a complete unit and played. Our new hi and low

Agogo Pops are Agogo bells with an internal weighted striker that can be played like a shaker, gripped by the foam handle, or held and hit with a stick. Pearl aluminum Hex Ganzas are uniquely shaped shakers that produce three separate sounds by simply shaking them against different sides of the instrument. Their unique light tone can also produce a wah-wah effect by varying hand pressure. The Shakerine, Mini Shakerine and Mini-Ganzeiro combine a shaker/ganza type sound with a Tambourine jingle sound.

Both sounds can be played independently or together by varying the technique. The Shakerine features a full size wooden Tambourine with a Ganza handle. The Mini-Shakerine is a small square Ganza with a set of Tambourine jingles and the Mini-Ganzeiro is larger with drier Brazilian style jingles. Our new Ago-Shas are a combination of a Ganza and Agogo with built in striker. They are available in hi and low tone sizes and a double featuring both attached to a single Ganza. Play the Ganza or the Agogo separately or both together to create a host of sounds. Our Beaded Maracas feature Shekere style beads, comfortable foam handles, and a durable fiberglass body for an excellent sound with greater control. Our Basket Ganza is a 4"x9" woven instrument with fiberglass ends. Wooden sticks inside create a light, airy sound when shaken against the sides or ends.

Our new Ago-Shas are a combination of a Ganza and Agogo with built in striker. They are available in hi and low tone sizes and a double featuring both attached to a single Ganza. Play the Ganza or the Agogo separately or both together to create a host of sounds. Our Beaded Maracas feature Shekere style beads, comfortable foam handles, and a durable fiberglass body for an excellent sound with greater control. Our Basket Ganza is a 4"x9" woven instrument with fiberglass ends. Wooden sticks inside create a light, airy sound when shaken against the sides or ends.

Our new Ago-Shas are a combination of a Ganza and Agogo with built in striker. They are available in hi and low tone sizes and a double featuring both attached to a single Ganza. Play the Ganza or the Agogo separately or both together to create a host of sounds. Our Beaded Maracas feature Shekere style beads, comfortable foam handles, and a durable fiberglass body for an excellent sound with greater control. Our Basket Ganza is a 4"x9" woven instrument with fiberglass ends. Wooden sticks inside create a light, airy sound when shaken against the sides or ends.

Our new Ago-Shas are a combination of a Ganza and Agogo with built in striker. They are available in hi and low tone sizes and a double featuring both attached to a single Ganza. Play the Ganza or the Agogo separately or both together to create a host of sounds. Our Beaded Maracas feature Shekere style beads, comfortable foam handles, and a durable fiberglass body for an excellent sound with greater control. Our Basket Ganza is a 4"x9" woven instrument with fiberglass ends. Wooden sticks inside create a light, airy sound when shaken against the sides or ends.

Our new Ago-Shas are a combination of a Ganza and Agogo with built in striker. They are available in hi and low tone sizes and a double featuring both attached to a single Ganza. Play the Ganza or the Agogo separately or both together to create a host of sounds. Our Beaded Maracas feature Shekere style beads, comfortable foam handles, and a durable fiberglass body for an excellent sound with greater control. Our Basket Ganza is a 4"x9" woven instrument with fiberglass ends. Wooden sticks inside create a light, airy sound when shaken against the sides or ends.

Our new Ago-Shas are a combination of a Ganza and Agogo with built in striker. They are available in hi and low tone sizes and a double featuring both attached to a single Ganza. Play the Ganza or the Agogo separately or both together to create a host of sounds. Our Beaded Maracas feature Shekere style beads, comfortable foam handles, and a durable fiberglass body for an excellent sound with greater control. Our Basket Ganza is a 4"x9" woven instrument with fiberglass ends. Wooden sticks inside create a light, airy sound when shaken against the sides or ends.



Pearl[®]
www.pearldrums.com

For more information on any Pearl Product see your local authorized Pearl dealer or visit our web site at www.pearldrums.com. All products and specifications are subject to change without notice. ©Pearl Corp. 2001.

ITEM# CP1201
Printed 12-01, in the USA